

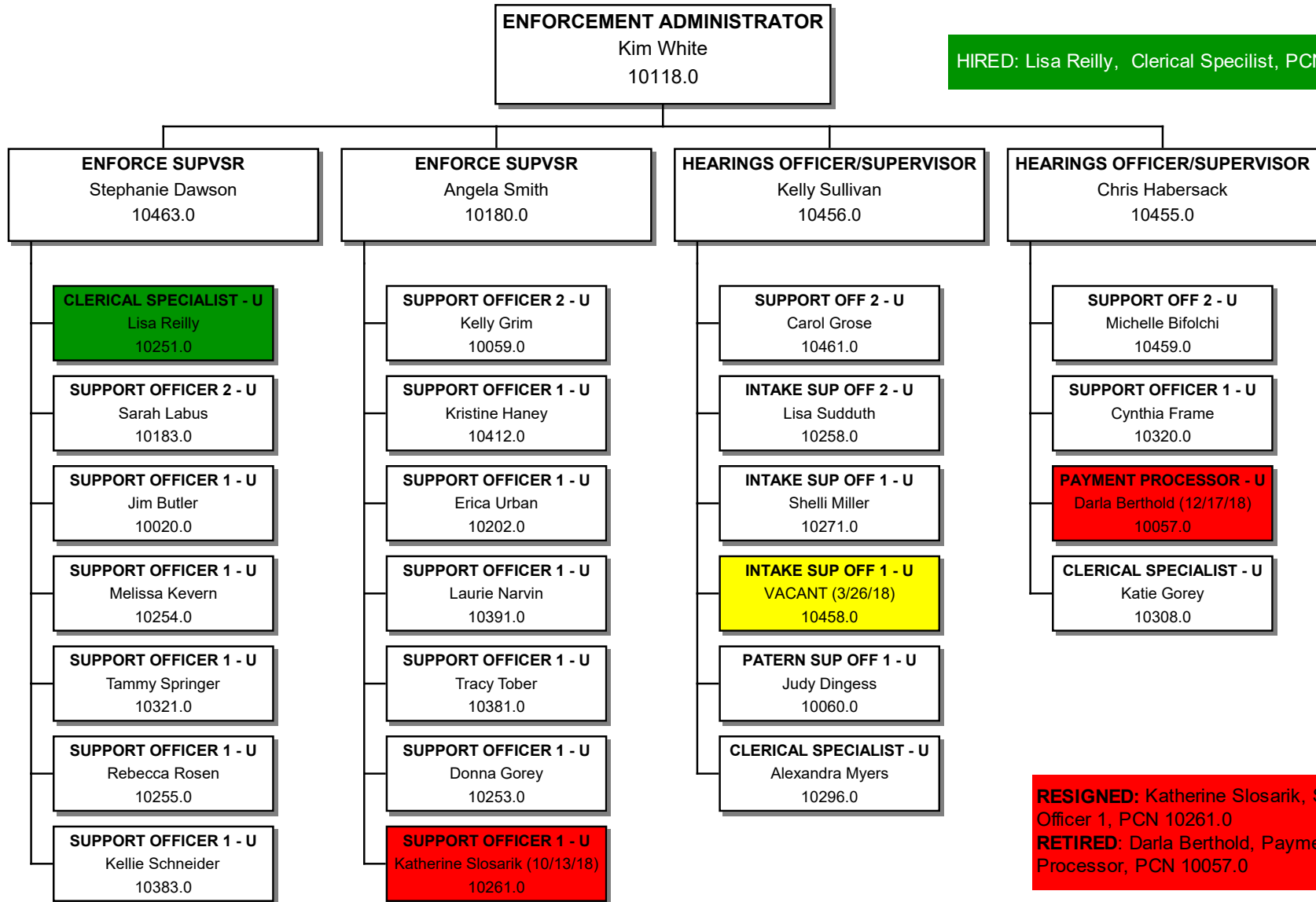


MEDINA COUNTY BOARD OF COMMISSIONERS  
Job & Family Services - Enforcement



# D

Remove: Intake Supervisor PCN 10027.0



**HIRED:** Lisa Reilly, Clerical Specialist, PCN 10251.0

**RESIGNED:** Katherine Slosarik, Support Officer 1, PCN 10261.0  
**RETIRED:** Darla Berthold, Payment Processor, PCN 10057.0